

Deafness

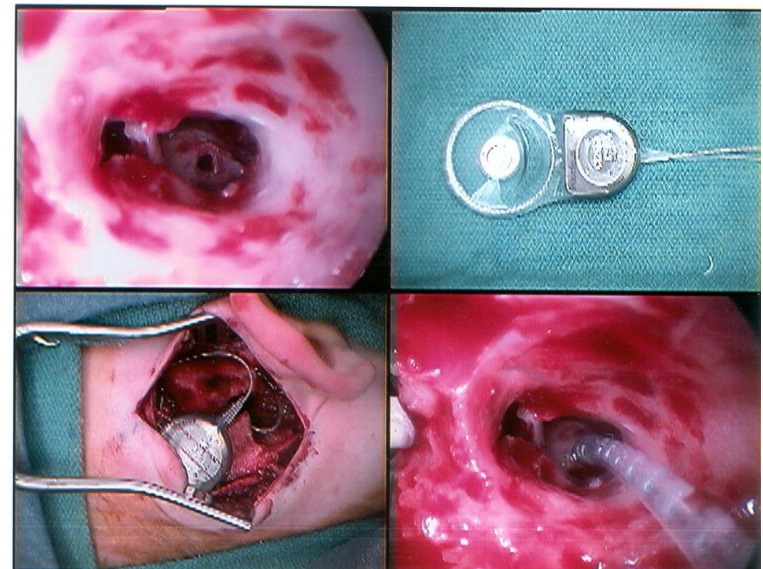
Conduction Deafness

- Something goes wrong with the sound and the vibration on the way to the cochlea.
- You can replace the bones or get a hearing aid to help.



Nerve (sensorineural) Deafness

- The hair cells in the cochlea get damaged.
- Loud noises can cause this type of deafness.
- NO WAY to replace the hairs.
- Cochlea implant is possible.

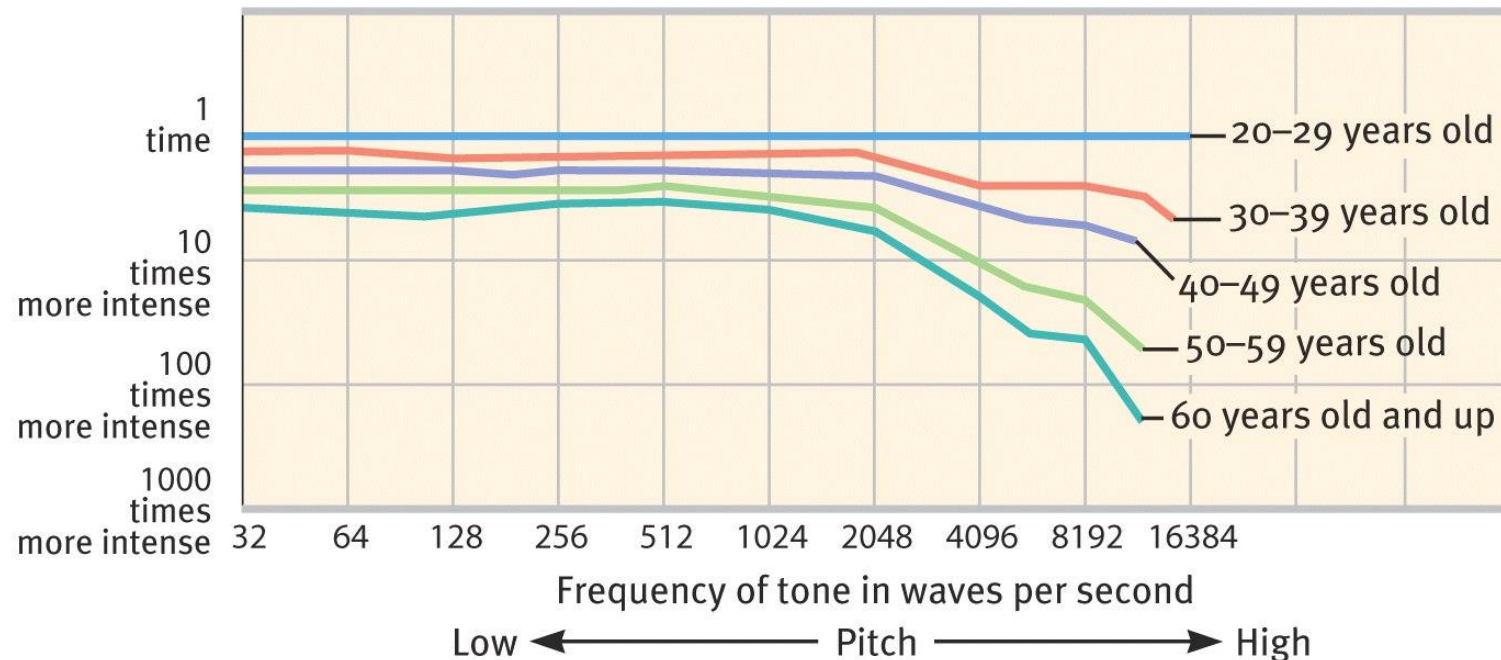


Hearing Deficits



Older people tend to hear low frequencies well but suffer hearing loss when listening for high frequencies.

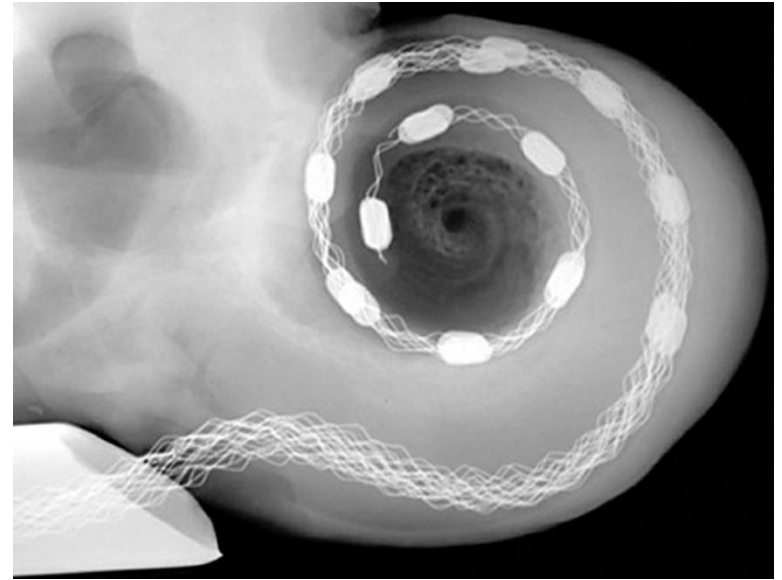
Amplitude (intensity) required for perception relative to 20–29-year-old group



A cochlear implant is an electronic medical device that replaces the function of the damaged inner ear. Unlike hearing aids, which make sounds louder, cochlear implants do the work of damaged parts of the inner ear (cochlea) to provide sound signals to the brain.

Hotly debated in deaf culture.

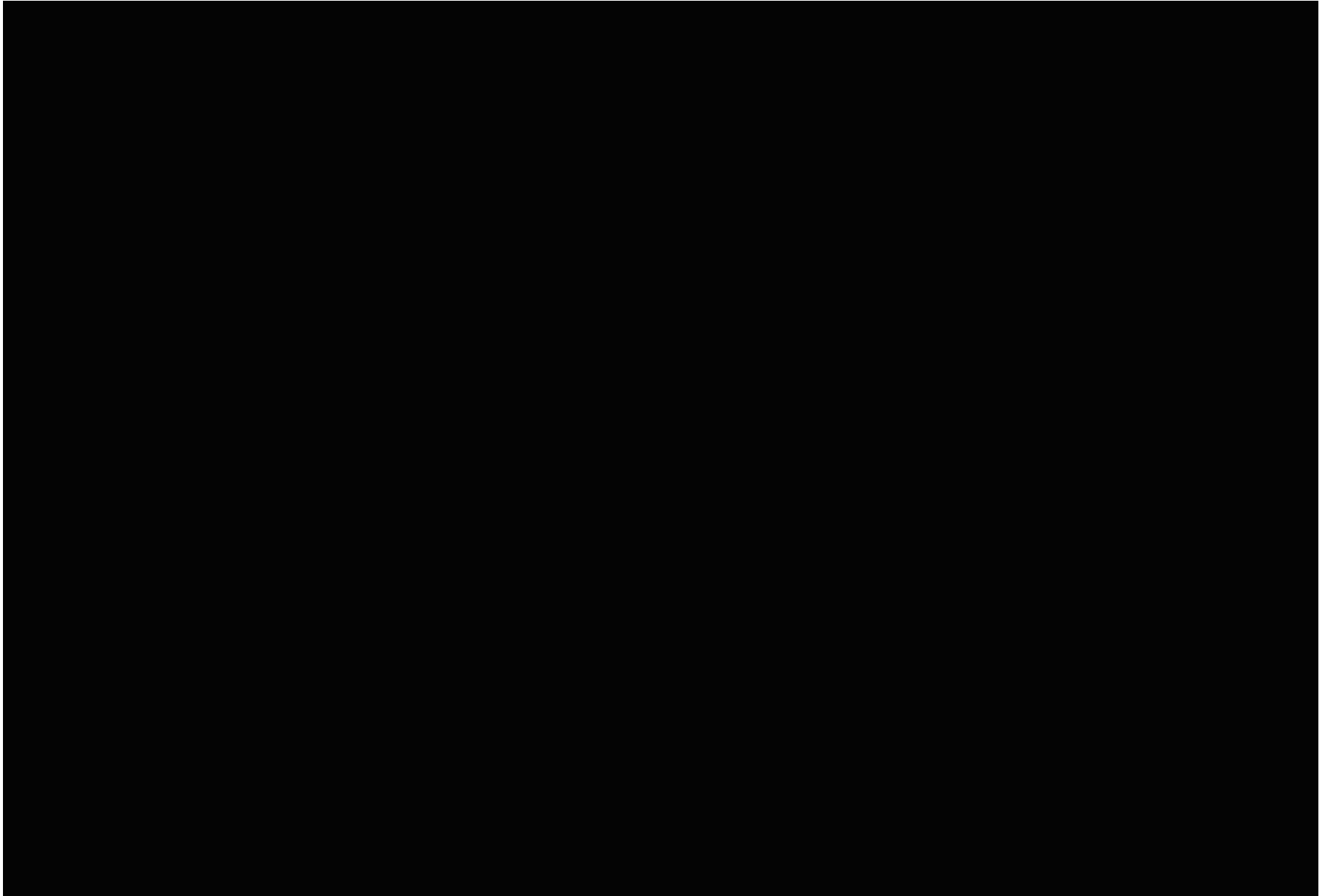
Cochlear implants perpetuate the idea that deaf people need to be "fixed" — and a lot of deaf people take issue with that.



Cochlear Implant

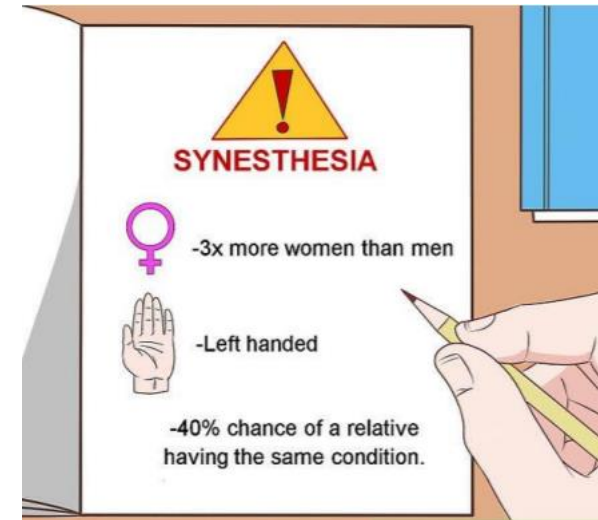
Cochlear Implants

[Def Jam – What music sounds like through cochlear implants.](#)



Synesthesia: what is it?

- Means “joined sensations”
- Synesthesia is a naturally-occurring condition whereby certain individuals experience information that is usually experienced in one modality (say, a sound) in a different modality (e.g. a visual pattern)
- Example: listening to tones or looking at numbers evokes colors. (One of the most common types.)



No consistency for color associations across synesthetes

SYNESTHESIA
0123456789

History

- It is estimated that 1 in every 25,000 are born with it. Some do not realize until later in life.
- Females outnumber males 6 to 1
- It seems to run in families
- It has been first introduced in 1880
- Psychologists ignored it until 1980's
- With new understandings of how the brain works, it is popular again.





John Lennon - Imagine



John Mayer - Gravity

[Melissa McCracken](#)

An artist with synesthesia who paints how she experiences songs.



Radiohead- Karma Police

Led Zeppelin – Since I've Been Loving You

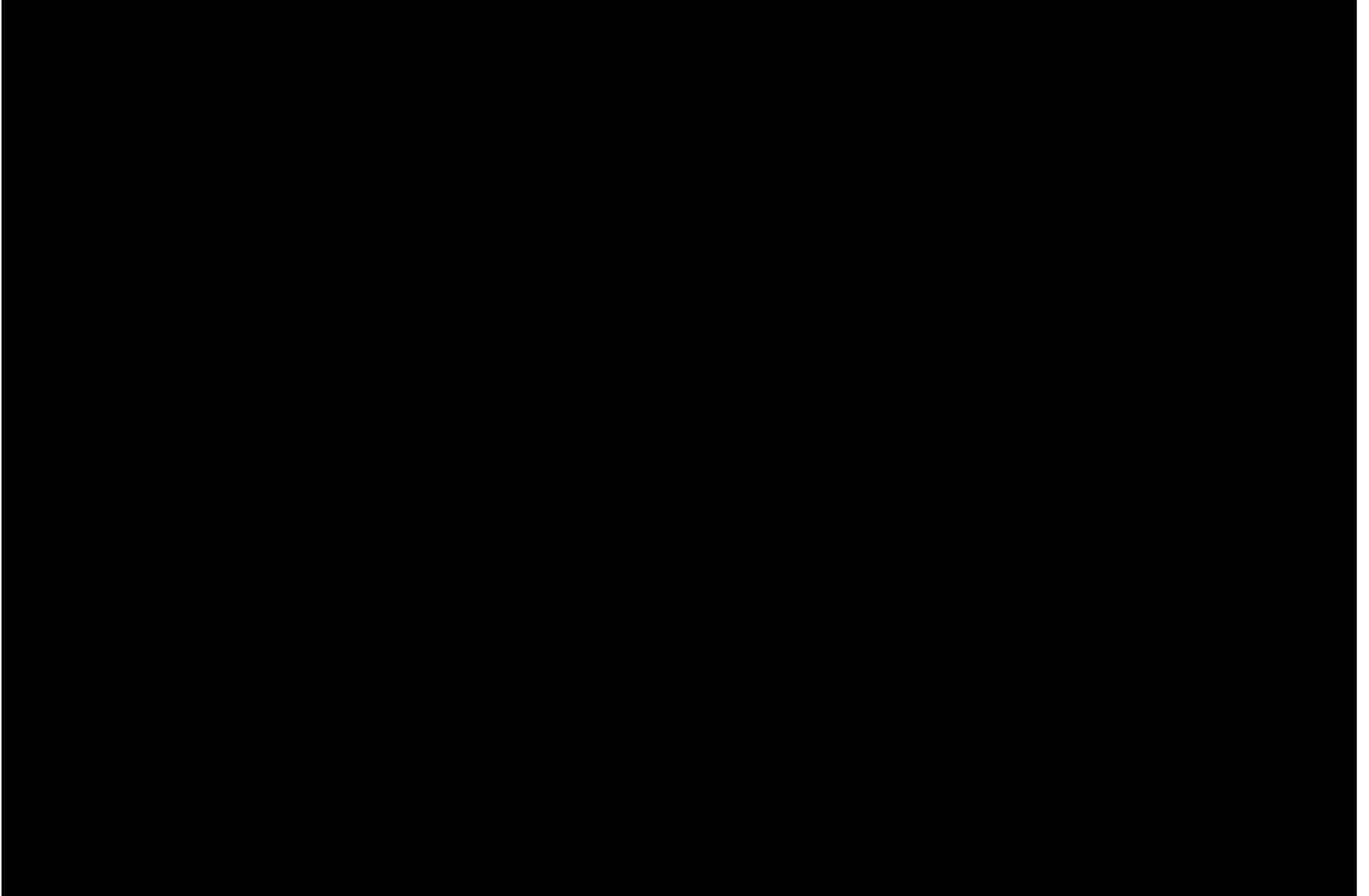


produced by
Miriam Weintraub

th
sense



Synesthesia



Are you synaesthetic?

We will be able to test to see if you are a synaesthetic... This tests for number-color synaesthesia.

Here is how it works:

- Colors are obvious.
- If you look at a collection of black things and some of them are red you don't need to search - the red things just jump out at you.
- Your job will be to look at a collection of black symbols, and spot the red colored ones.

